

Introduction to the interface

This presentation contains a step-by-step guide to ABC Analyzer.

This guide introduces you to:

- **Overall structure**
- **The 6 tabs**
- **Dataslicers**
- **Click reports**
- **New categorizations**



Overall structure

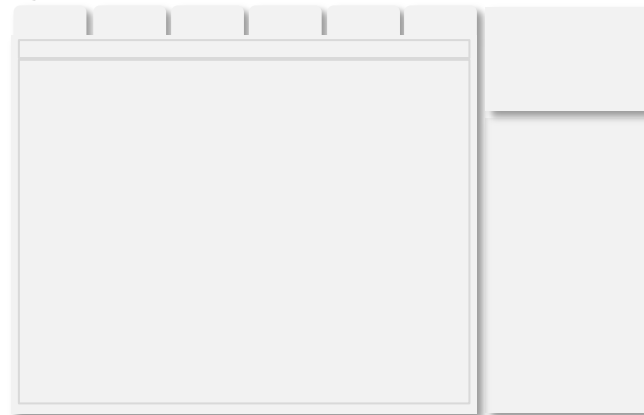
The structure in ABC Analyzer

6 tabs:

ABC Analyzer consists of 6 different tabs in which you can see your analysis: **Overview, Graph, KPI, Crosstable, Data and Reports.**

Workspace:

Your analysis is displayed here.



Right-side controls:

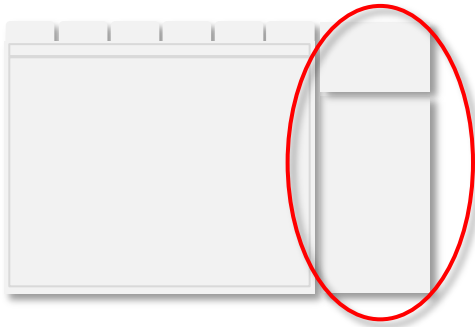
On your right, you will find all important controls.

The active categorization is shown at the top.

Report & dataslicers:

Choose which **report** to see from the list in **Report slicer**, and continue to slice and dice data using **dataslicers.**

The control bar

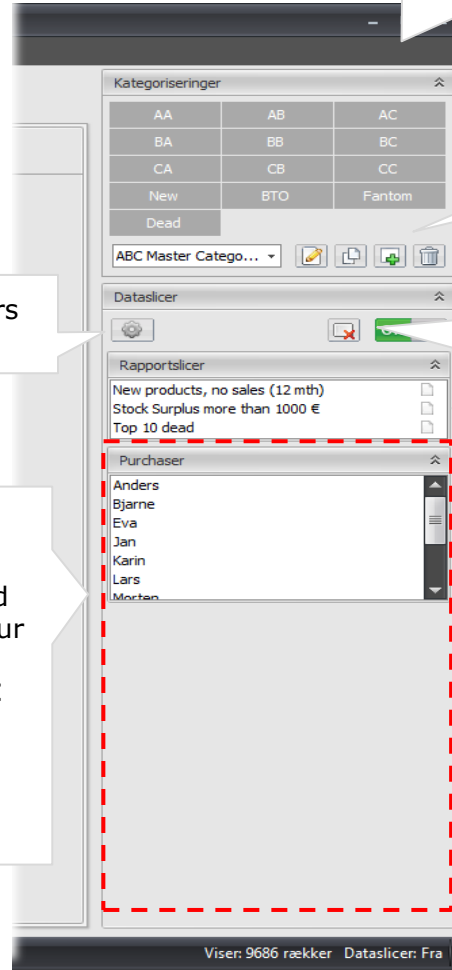


Select and set up your dataslicers using the **cogwheel**.

Dataslicers are displayed here.

Use dataslicers to dive into data and highlight relevant subsections of your analysis: Choose only to see items from a particular purchaser, an ABC category, or a supplier.

Combine several dataslicers to narrow the data on display.



Categorizations: The active categorization is shown at the top.

Select which categorization you want to see, **create a new**, copy, edit or delete one using the menu.

Click the bottom **"Clear all dataslicers"** to remove all markings.

Report slicer: Click to see the content of a **predefined report**.

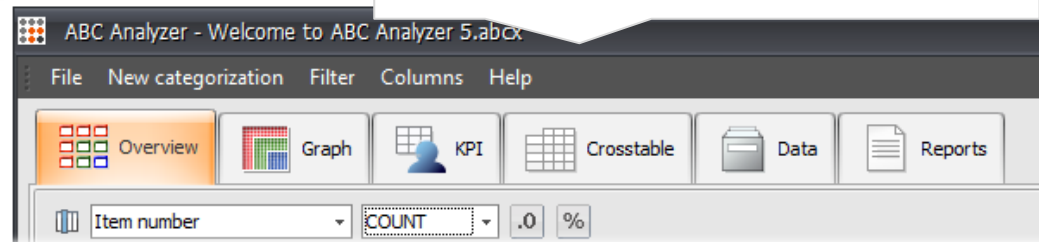
If you have not chosen a report, you will see all items in your workspace.

The 6 tabs



Display:

Switch between tabs by clicking at them. The right-side controls affect all the tabs, except "Reports".



Each tab has a local toolbar.

Introduction to the 6 tabs

Overview

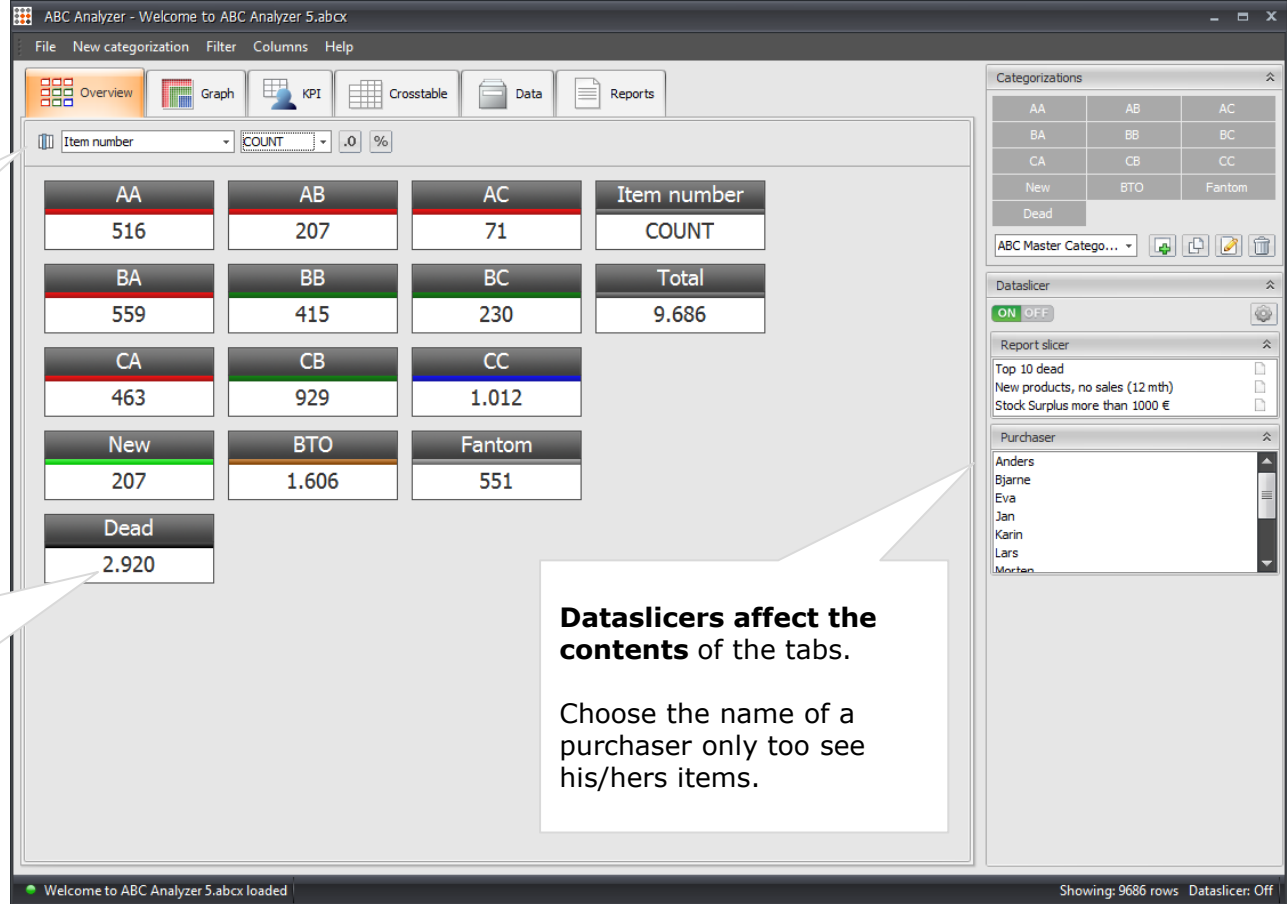
In **Overview** you see all items divided into ABC categories.

Adjust the tab:

Choose what you want to see per category.

For example choose to see the turnover per category, instead of the number of items.

Click the number in the category "Dead" to see **which items** it contains. The items are automatically shown in a new window (a click report).



The screenshot shows the ABC Analyzer software interface. The main window displays a grid of data for various categories. The categories are arranged in a grid with columns for 'Item number' and 'COUNT'. The categories are: AA (516), AB (207), AC (71), BA (559), BB (415), BC (230), CA (463), CB (929), CC (1,012), New (207), BTO (1,606), Fantom (551), and Dead (2,920). The 'Total' row shows a count of 9,686. The interface includes a menu bar (File, New categorization, Filter, Columns, Help), a toolbar (Overview, Graph, KPI, Crosstable, Data, Reports), and a right-hand sidebar with sections for 'Categorizations', 'Dataslicer', 'Report slicer', and 'Purchaser'. The 'Dataslicer' is currently turned ON. The 'Report slicer' shows 'Top 10 dead', 'New products, no sales (12 mth)', and 'Stock Surplus more than 1000 €'. The 'Purchaser' list includes Anders, Bjarne, Eva, Jan, Karin, Lars, and Morten. The status bar at the bottom indicates 'Welcome to ABC Analyzer 5.abcx loaded' and 'Showing: 9686 rows Dataslicer: Off'.

Category	Item number	COUNT
AA	516	
AB	207	
AC	71	
BA	559	
BB	415	
BC	230	
CA	463	
CB	929	
CC	1,012	
New	207	
BTO	1,606	
Fantom	551	
Dead	2,920	
Total		9,686

Dataslicers affect the contents of the tabs.

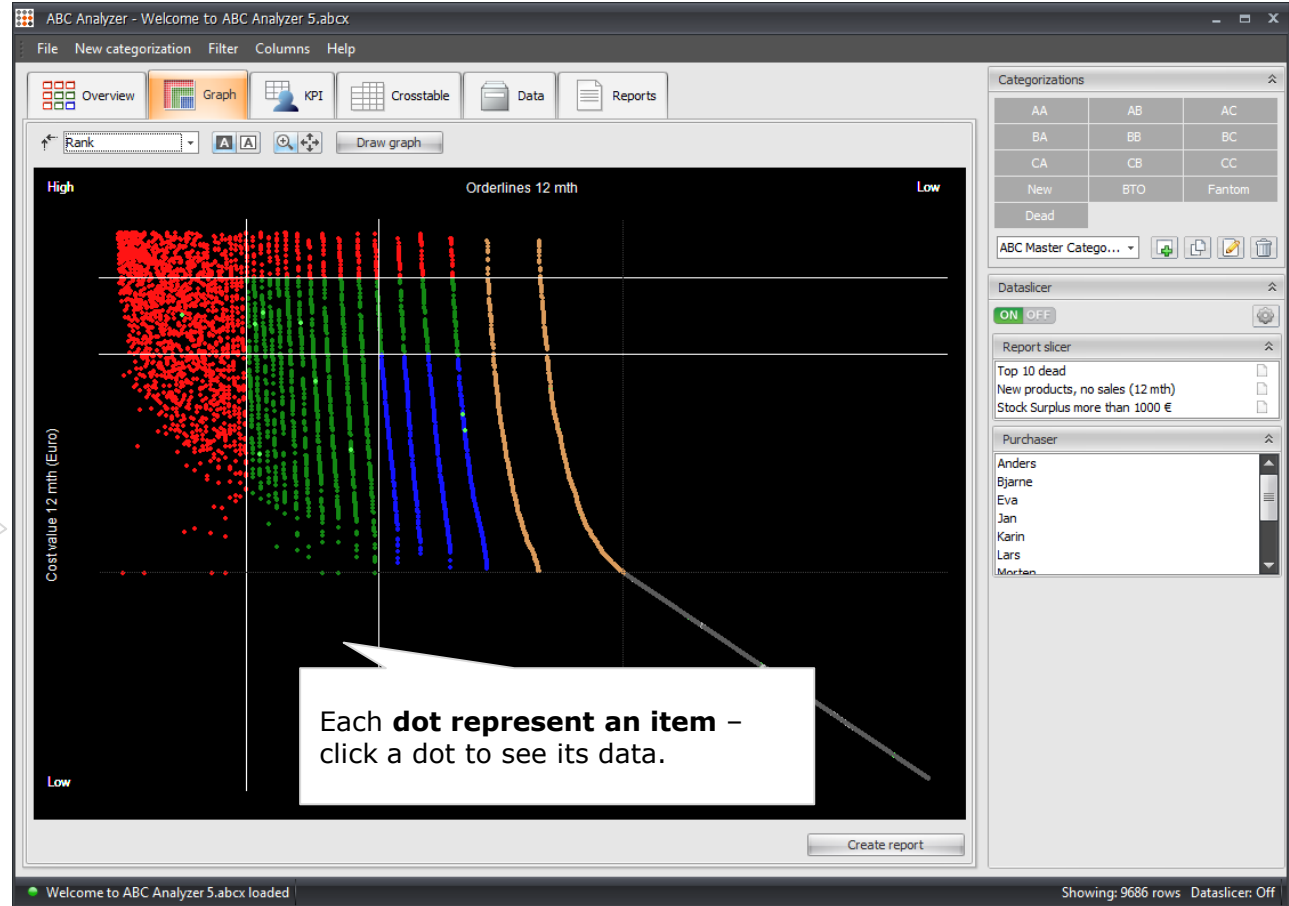
Choose the name of a purchaser only too see his/hers items.

Graph

Graph shows how your products are distributed in the ABC categorization.

The axis of the graph are always defined by the parameters used in the categorization.

The colour shows you which ABC category the item belongs to.



KPI

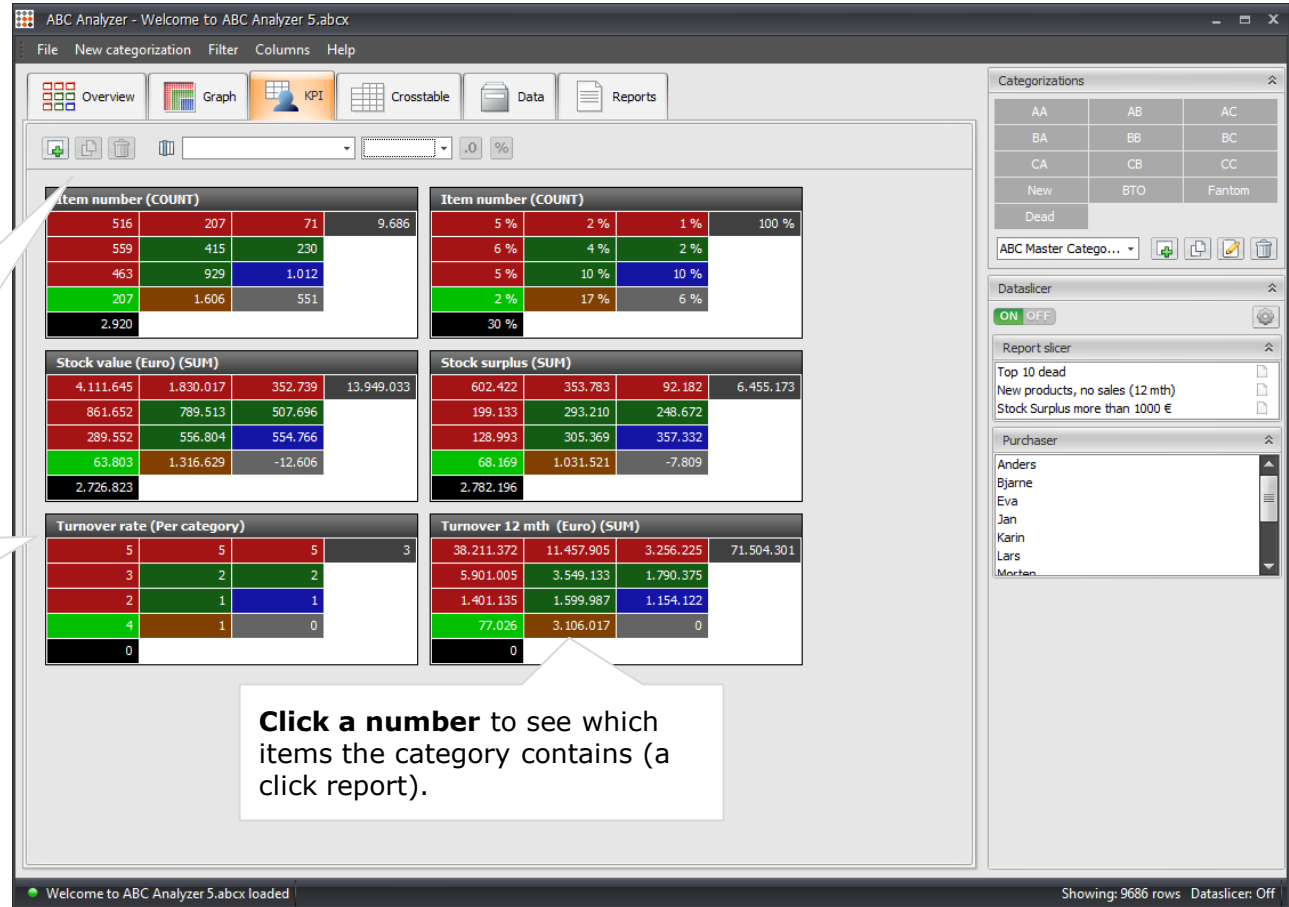
KPI allows you to customize a KPI board displaying the key numbers for each ABC category.

Add, copy or delete one or more KPI boards.

The menu bar is activated when you have added a new board or selected an existing one.

Select a board by clicking on its grey top bar (it turns blue when selected).

Click a number to see which items the category contains (a click report).



ABC Analyzer - Welcome to ABC Analyzer 5.abcx

File New categorization Filter Columns Help

Overview Graph KPI Crosstable Data Reports

Item number (COUNT)

516	207	71	9.686
559	415	230	
463	929	1.012	
207	1.606	551	
2.920			

Item number (COUNT)

5 %	2 %	1 %	100 %
6 %	4 %	2 %	
5 %	10 %	10 %	
2 %	17 %	6 %	
30 %			

Stock value (Euro) (SUM)

4.111.645	1.830.017	352.739	13.949.033
861.652	789.513	507.696	
289.552	556.804	554.766	
63.803	1.316.629	-12.606	
2.726.823			

Stock surplus (SUM)

602.422	353.783	92.182	6.455.173
199.133	293.210	248.672	
128.993	305.369	357.332	
68.169	1.031.521	-7.809	
2.782.196			

Turnover rate (Per category)

5	5	5	3
3	2	2	
2	1	1	
4	1	0	
0			

Turnover 12 mth (Euro) (SUM)

38.211.372	11.457.905	3.256.225	71.504.301
5.901.005	3.549.133	1.790.375	
1.401.135	1.599.987	1.154.122	
77.026	3.106.017	0	
0			

Categories

AA	AB	AC
BA	BB	BC
CA	CB	CC
New	BTO	Fantom
Dead		

ABC Master Catego...

Dataslicer

ON OFF

Report slicer

- Top 10 dead
- New products, no sales (12 mth)
- Stock Surplus more than 1000 €

Purchaser

- Anders
- Bjarne
- Eva
- Jan
- Karin
- Lars
- Morten

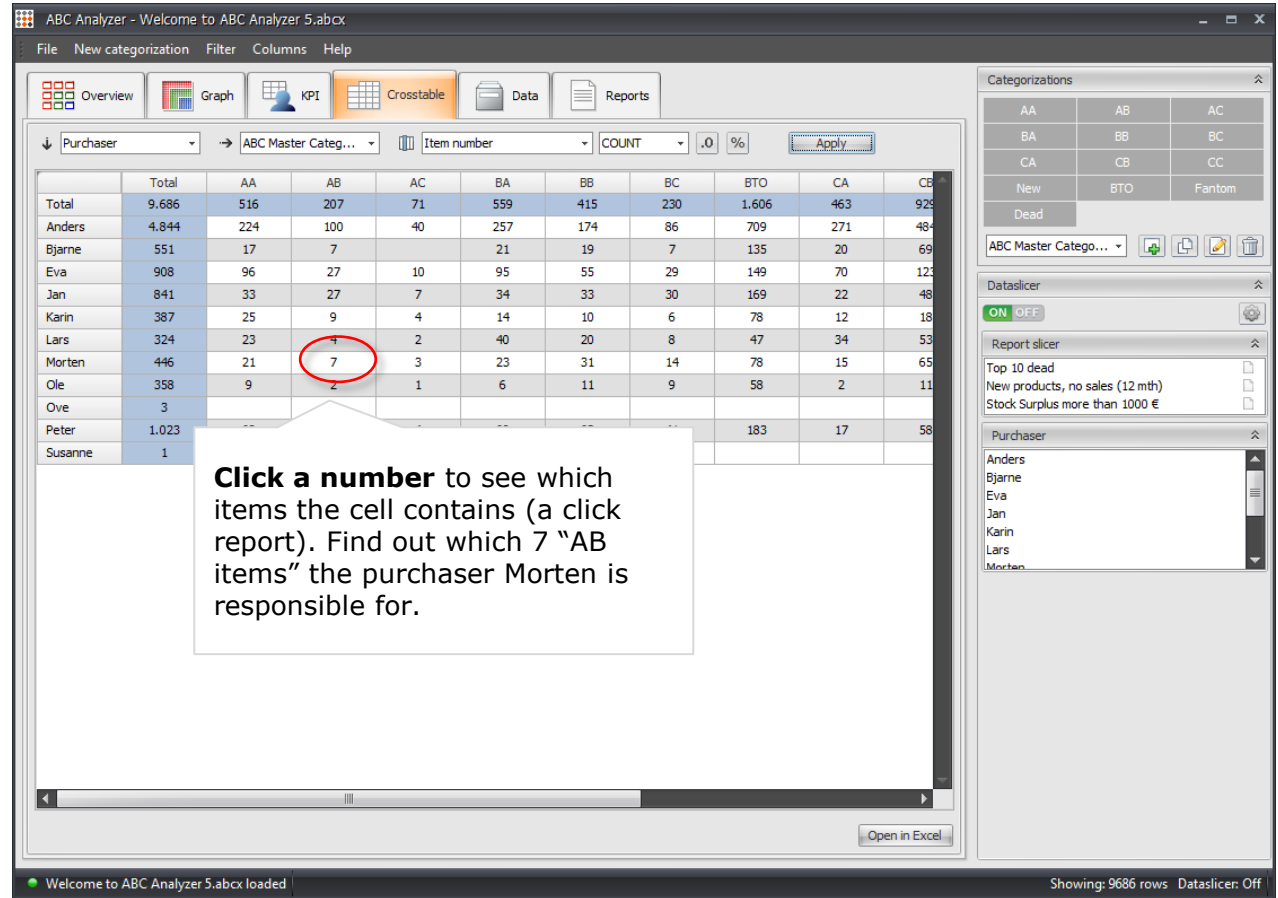
Welcome to ABC Analyzer 5.abcx loaded

Showing: 9686 rows Dataslicer: Off

Crosstable

Crosstable allows you to map your data in a two dimensional grid.

This crosstable shows how many items each purchaser have in each ABC category.



ABC Analyzer - Welcome to ABC Analyzer 5.abcx

File New categorization Filter Columns Help

Overview Graph KPI **Crosstable** Data Reports

Purchaser → ABC Master Categ... Item number COUNT .0 % Apply

	Total	AA	AB	AC	BA	BB	BC	BTO	CA	CB
Total	9.686	516	207	71	559	415	230	1.606	463	925
Anders	4.844	224	100	40	257	174	86	709	271	484
Bjarne	551	17	7		21	19	7	135	20	69
Eva	908	96	27	10	95	55	29	149	70	123
Jan	841	33	27	7	34	33	30	169	22	48
Karin	387	25	9	4	14	10	6	78	12	18
Lars	324	23	4	2	40	20	8	47	34	53
Morten	446	21	7	3	23	31	14	78	15	65
Ole	358	9	2	1	6	11	9	58	2	11
Ove	3									
Peter	1.023							183	17	58
Susanne	1									

Categories: AA, AB, AC, BA, BB, BC, CA, CB, New, BTO, Fantom, Dead

Dataslicer: ON OFF

Report slicer: Top 10 dead, New products, no sales (12 mth), Stock Surplus more than 1000 €

Purchaser: Anders, Bjarne, Eva, Jan, Karin, Lars, Morten

Open in Excel

Welcome to ABC Analyzer 5.abcx loaded Showing: 9686 rows Dataslicer: Off

Click a number to see which items the cell contains (a click report). Find out which 7 "AB items" the purchaser Morten is responsible for.

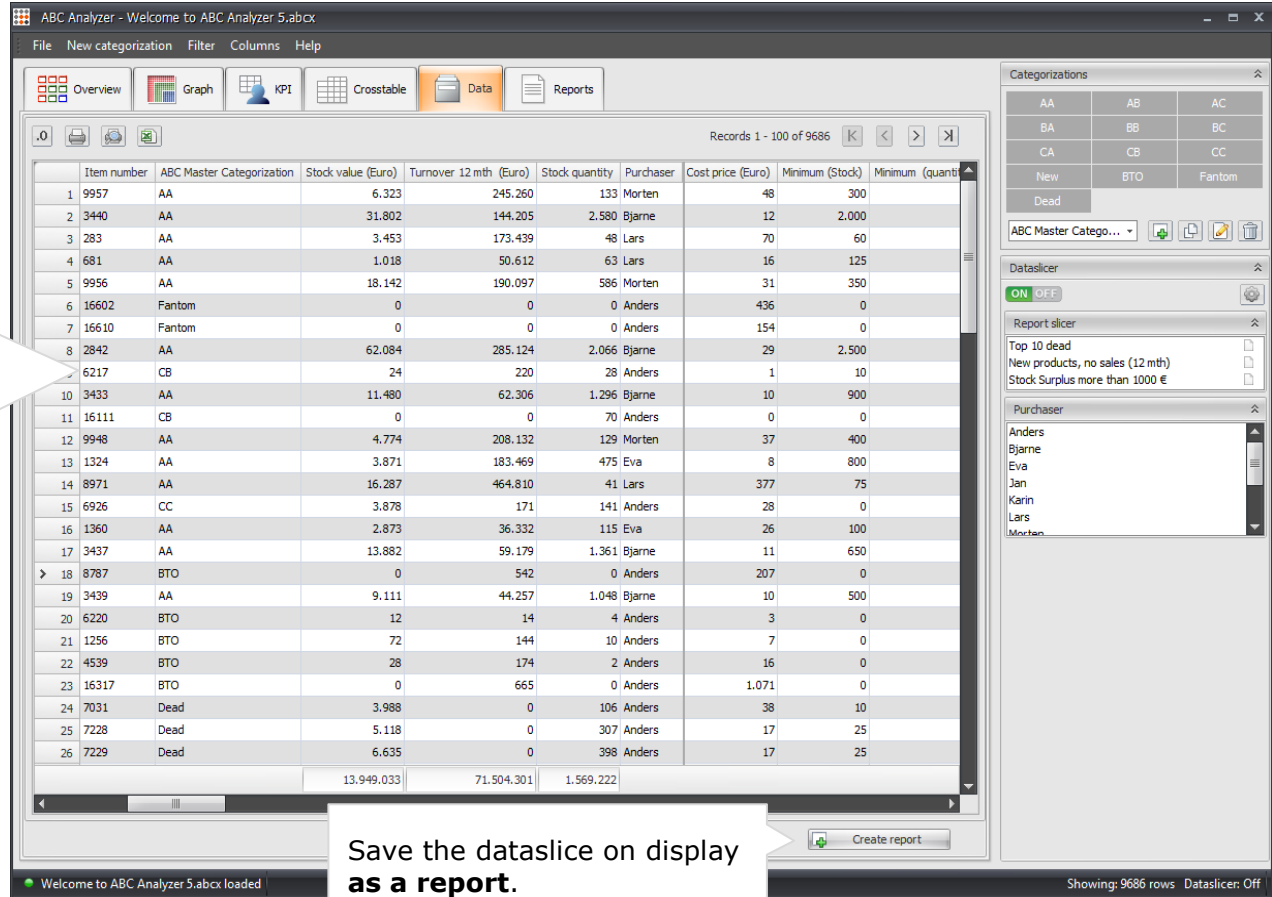
Data

The **data tab** shows you all rows and columns in your data.

Hide or lock columns by right clicking.

Arrange the columns here. The order affects the **inherited layout of all click reports**.

So, if you always want the column "item number" displayed to the far left, right-click to lock it.



ABC Analyzer - Welcome to ABC Analyzer 5.abcx

File New categorization Filter Columns Help

Overview Graph KPI Crosstable **Data** Reports

Records 1 - 100 of 9686

	Item number	ABC Master	Categorization	Stock value (Euro)	Turnover 12 mth (Euro)	Stock quantity	Purchaser	Cost price (Euro)	Minimum (Stock)	Minimum (quantity)
1	9957	AA		6.323	245.260	133	Morten	48	300	
2	3440	AA		31.802	144.205	2.580	Bjarne	12	2.000	
3	283	AA		3.453	173.439	48	Lars	70	60	
4	681	AA		1.018	50.612	63	Lars	16	125	
5	9956	AA		18.142	190.097	586	Morten	31	350	
6	16602	Fantom		0	0	0	Anders	436	0	
7	16610	Fantom		0	0	0	Anders	154	0	
8	2842	AA		62.084	285.124	2.066	Bjarne	29	2.500	
9	6217	CB		24	220	28	Anders	1	10	
10	3433	AA		11.480	62.306	1.296	Bjarne	10	900	
11	16111	CB		0	0	70	Anders	0	0	
12	9948	AA		4.774	208.132	129	Morten	37	400	
13	1324	AA		3.871	183.469	475	Eva	8	800	
14	8971	AA		16.287	464.810	41	Lars	377	75	
15	6926	CC		3.878	171	141	Anders	28	0	
16	1360	AA		2.873	36.332	115	Eva	26	100	
17	3437	AA		13.882	59.179	1.361	Bjarne	11	650	
18	8787	BTO		0	542	0	Anders	207	0	
19	3439	AA		9.111	44.257	1.048	Bjarne	10	500	
20	6220	BTO		12	14	4	Anders	3	0	
21	1256	BTO		72	144	10	Anders	7	0	
22	4539	BTO		28	174	2	Anders	16	0	
23	16317	BTO		0	665	0	Anders	1.071	0	
24	7031	Dead		3.988	0	106	Anders	38	10	
25	7228	Dead		5.118	0	307	Anders	17	25	
26	7229	Dead		6.635	0	398	Anders	17	25	
				13.949.033	71.504.301	1.569.222				

Categories

AA	AB	AC
BA	BB	BC
CA	CB	CC
New	BTO	Fantom
Dead		

ABC Master Catego...

Dataslicer

ON OFF

Report slicer

Top 10 dead
New products, no sales (12 mth)
Stock Surplus more than 1000 €

Purchaser

Anders
Bjarne
Eva
Jan
Karin
Lars
Morten

Create report

Showing: 9686 rows Dataslicer: Off

Welcome to ABC Analyzer 5.abcx loaded

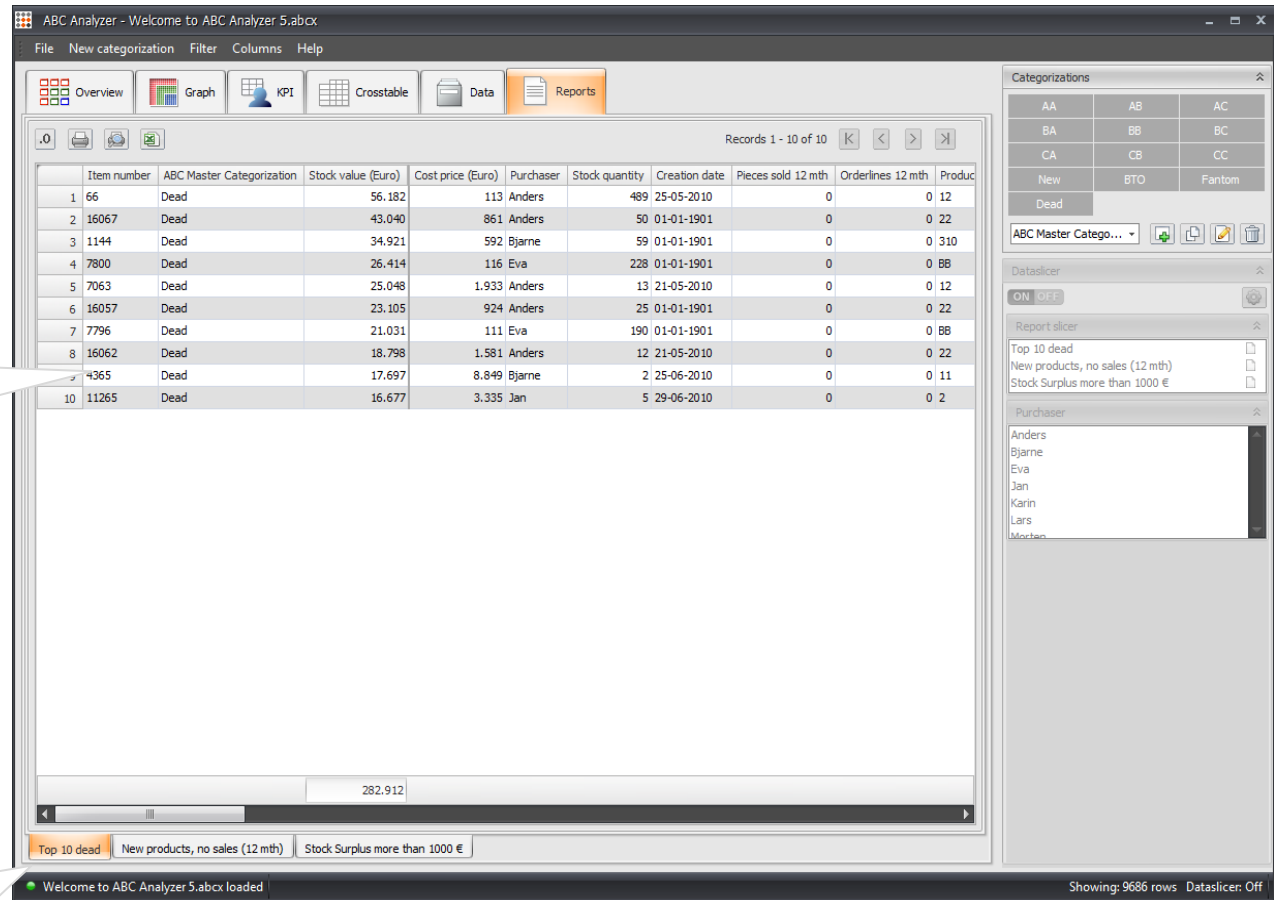
Save the dataslice on display as a report.

Reports

Reports contain all your saved reports.

Edit the settings of hidden and locked columns in the report by right-clicking.

Click a tab to see the report. Right-click to **edit criteria defining the report** or to **delete a report**.



ABC Analyzer - Welcome to ABC Analyzer 5.abcx

File New categorization Filter Columns Help

Overview Graph KPI Crosstable Data Reports

Records 1 - 10 of 10

	Item number	ABC Master	Categorization	Stock value (Euro)	Cost price (Euro)	Purchaser	Stock quantity	Creation date	Pieces sold 12 mth	Orderlines 12 mth	Product
1	66	Dead		56.182	113	Anders	489	25-05-2010	0	0	12
2	16067	Dead		43.040	861	Anders	50	01-01-1901	0	0	22
3	1144	Dead		34.921	592	Bjarne	59	01-01-1901	0	0	310
4	7800	Dead		26.414	116	Eva	228	01-01-1901	0	0	BB
5	7063	Dead		25.048	1.933	Anders	13	21-05-2010	0	0	12
6	16057	Dead		23.105	924	Anders	25	01-01-1901	0	0	22
7	7796	Dead		21.031	111	Eva	190	01-01-1901	0	0	BB
8	16062	Dead		18.798	1.581	Anders	12	21-05-2010	0	0	22
9	4365	Dead		17.697	8.849	Bjarne	2	25-06-2010	0	0	11
10	11265	Dead		16.677	3.335	Jan	5	29-06-2010	0	0	2

282.912

Top 10 dead New products, no sales (12 mth) Stock Surplus more than 1000 €

Showing: 9686 rows Dataslicer: Off

Categories: AA AB AC, BA BB BC, CA CB CC, New BTO Fantom, Dead

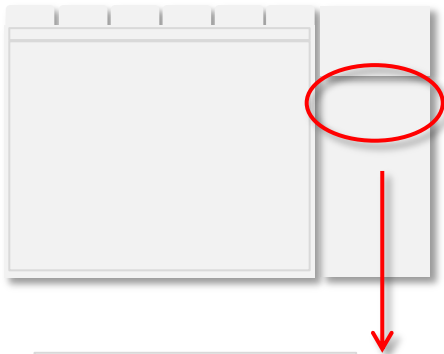
Dataslicer: ON/OFF

Report slicer: Top 10 dead, New products, no sales (12 mth), Stock Surplus more than 1000 €

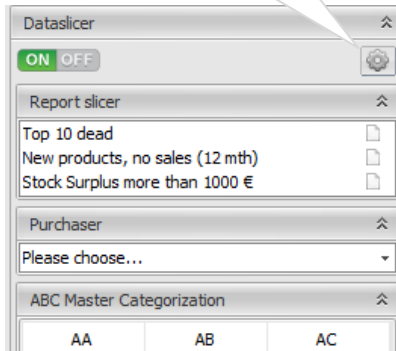
Purchaser: Anders, Bjarne, Eva, Jan, Karin, Lars, Moberg

Dataslicers

Set up dataslicers



Set up dataslicers using the cogwheel.



Choose the column which you want to slice on. Click "Add" to see it on the list below.

Manage dataslicers

Create new dataslicer

Choose column:

Dataslicer layout

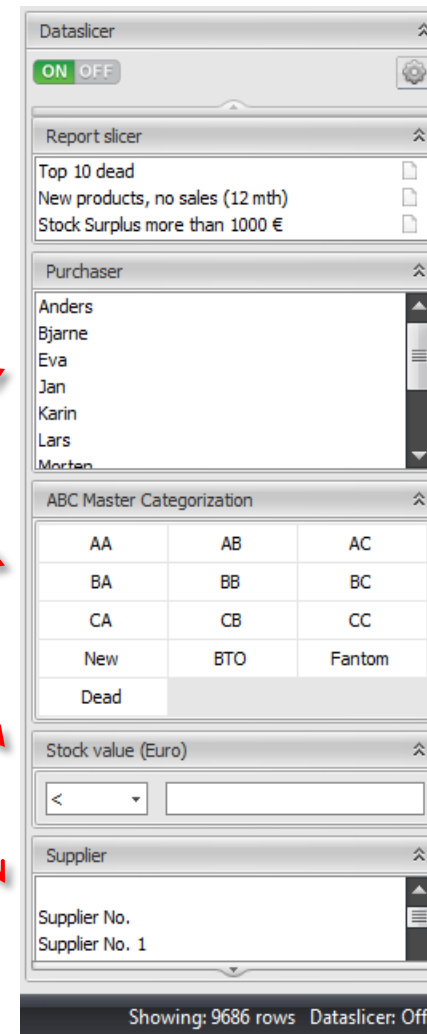
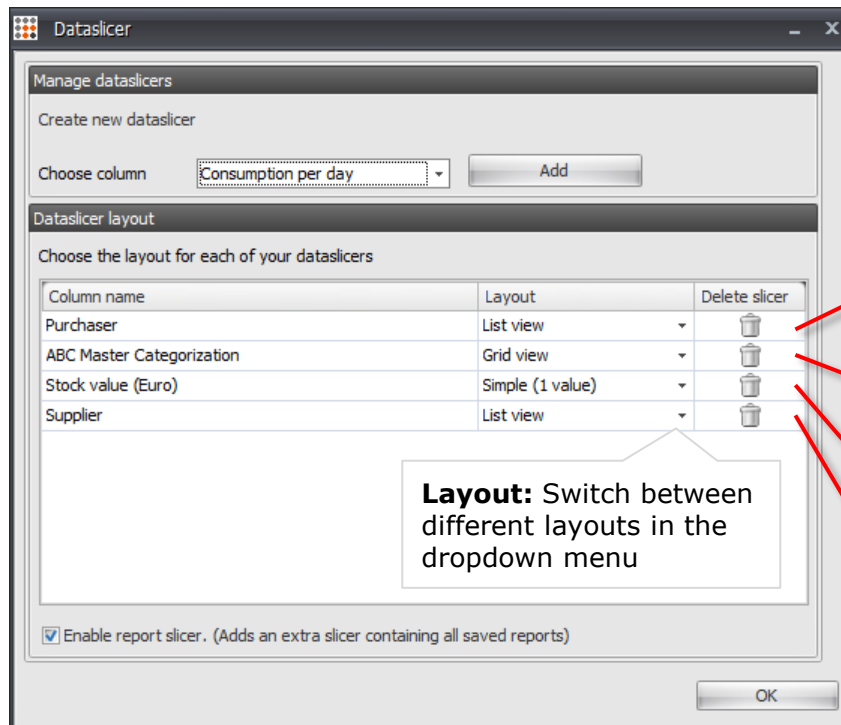
Choose the layout for each of your dataslicers

Column name	Layout	Delete slicer
Purchaser	Single value slicer	
ABC Master Categorization	Grid view	
Stock value (Euro)	Simple (1 value)	
Supplier	List view	

Enable report slicer. (Adds an extra slicer containing all saved reports)

Choose layout using the dropdown menu.

Examples of different slicer layouts



Dataslicers is one of your most important tools when analysing. You can **change and rearrange the dataslicers on the fly** using the cogwheel.

Slicing on/off shows how many items that meet the criteria defined by the dataslicers.

Click reports



Ready to save a report?

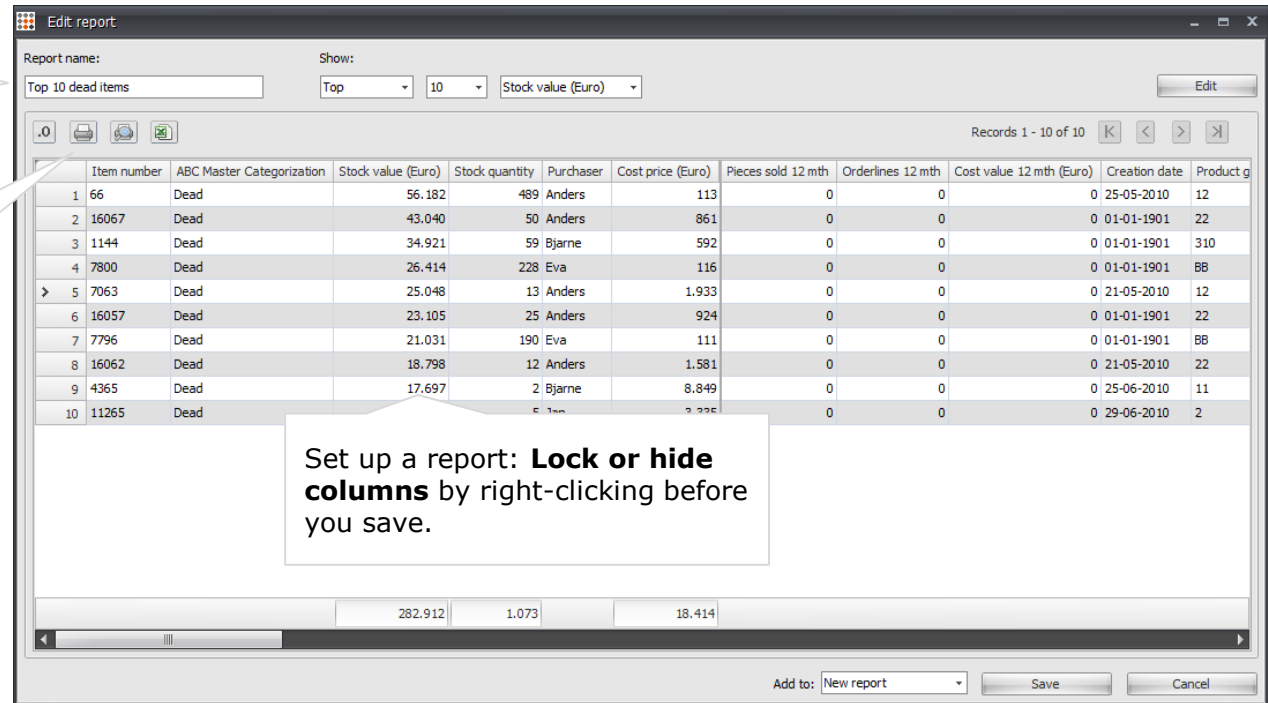
When you have narrowed your data using dataslicers then you are ready to create a report.

What's a click report?

Each time you click in Overview, KPI, or Crosstable a new window is shown: **A click report.**

Save the click report by giving it an **explanatory name.**

Print or open the report in Excel if you need to get it "out" of ABC Analyzer.



Report name: Top 10 dead items Show: Top 10 Stock value (Euro) Edit

Records 1 - 10 of 10

	Item number	ABC Master Categorization	Stock value (Euro)	Stock quantity	Purchaser	Cost price (Euro)	Pieces sold 12 mth	Orderlines 12 mth	Cost value 12 mth (Euro)	Creation date	Product g
1	66	Dead	56.182	489	Anders	113	0	0	0	25-05-2010	12
2	16067	Dead	43.040	50	Anders	861	0	0	0	01-01-1901	22
3	1144	Dead	34.921	59	Bjarne	592	0	0	0	01-01-1901	310
4	7800	Dead	26.414	228	Eva	116	0	0	0	01-01-1901	BB
>	5	7063	25.048	13	Anders	1.933	0	0	0	21-05-2010	12
6	16057	Dead	23.105	25	Anders	924	0	0	0	01-01-1901	22
7	7796	Dead	21.031	190	Eva	111	0	0	0	01-01-1901	BB
8	16062	Dead	18.798	12	Anders	1.581	0	0	0	21-05-2010	22
9	4365	Dead	17.697	2	Bjarne	8.849	0	0	0	25-06-2010	11
10	11265	Dead					0	0	0	29-06-2010	2

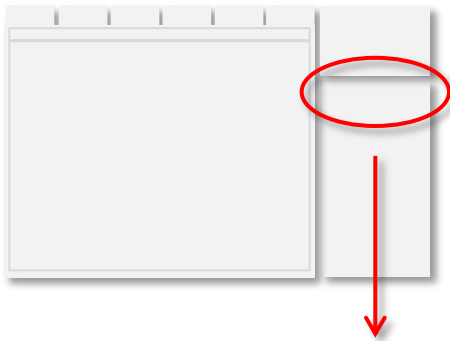
282.912 1.073 18.414

Add to: New report Save Cancel

Set up a report: **Lock or hide columns** by right-clicking before you save.

Create a new categorization

A new categorization



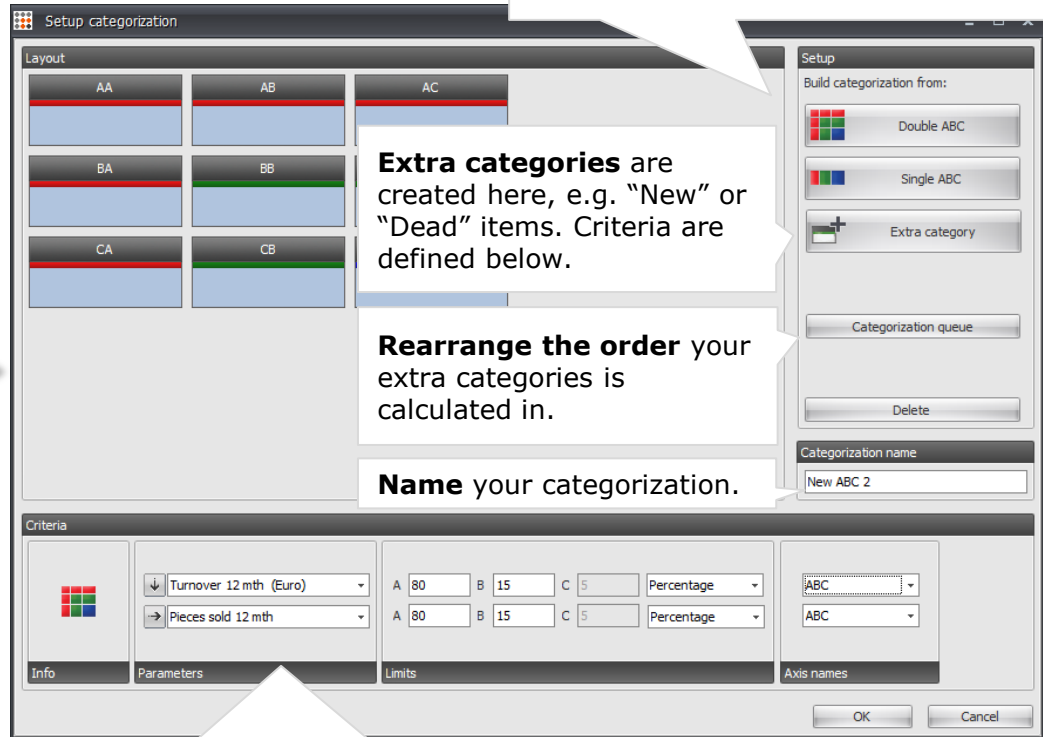
Add a **double or a single ABC** to your categorization.

Create a new **categorization** using the icon with the small, green cross.

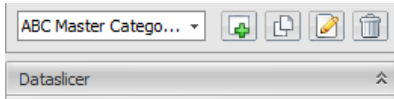
Extra categories are created here, e.g. "New" or "Dead" items. Criteria are defined below.

Rearrange the order your extra categories is calculated in.

Name your categorization.



Set up the criteria. Choose columns and defined limits. When you are creating a new extra category, you name it, choose its colour, and set up its criteria.



That's it! Well done

Want to know more? We post new features and tips & tricks on how to create cool analyses on our blog:

blog.abcsoftwork.com